



IMPORTANT
Installation Instructions

IMPORTANTE
Instrucciones de Instalación

IMPORTANT
Instructions d'installation

© 2021 0B7309808

Tools Needed

Herramientas requeridas

Outils requis

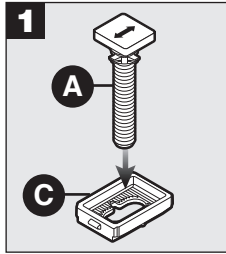
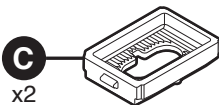
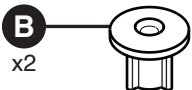
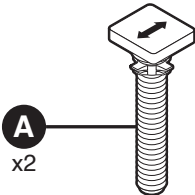


5/8" (16 mm)

Hardware Kit Includes

El kit de instalación incluye

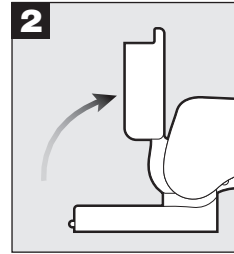
Le kit de matériel inclut



1
Insert (A) with arrow as shown into (C).

Inserte (A) con la flecha como se muestra en (C).

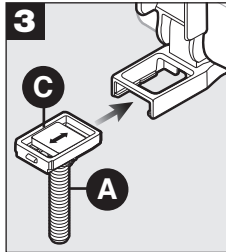
Insérer (A) avec la flèche tel qu'indiqué dans (C).



2
Open hinge caps.

Abra las cubiertas de las bisagras.

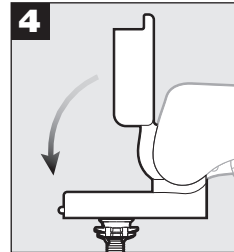
Ouvrir les couvercles de charnières.



3
Slide (AC) into hinges.

Deslice (AC) en las bisagras.

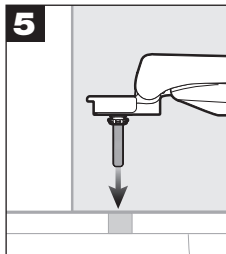
Glisser (AC) dans les charnières.



4
Close hinge caps.

Cierre la tapa de las bisagras.

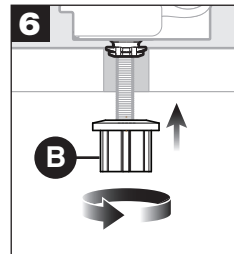
Fermer les couvercles de charnières.



5
Place seat on bowl.

Coloque el asiento en el sanitario.

Placer le siège sur la cuvette.

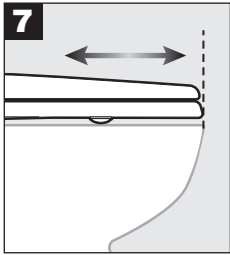


6
Finger tighten (B) to the under side of the bowl.

Aprieta con los dedos (B) en el lado inferior de el sanitario.

Serrer à la main (B) au-dessous de la cuvette.

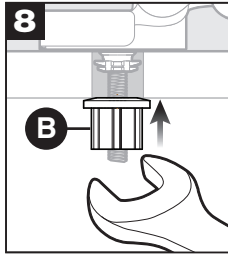




7
Adjust seat front to back for proper fit.

Ajuste el asiento de adelante hacia atrás para un ajuste apropiado.

Ajuster le siège d'avant en arrière pour un ajustement parfait.

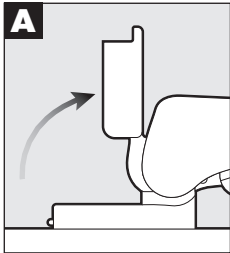


8
Tighten (B) to the under side of the bowl.

Apriete (B) en la parte inferior del sanitario.

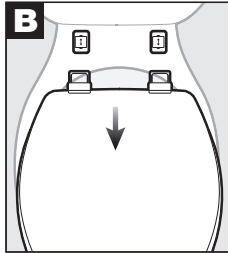
Serrer (B) au dessous de la cuvette.

REMOVAL & CLEANING | REMOVER & LIMPIAR | RETRAIT ET NETTOYAGE



A
Open hinge caps.

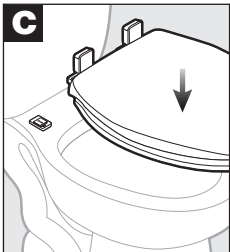
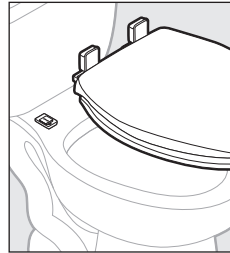
Abra las cubiertas de las bisagras.
Ouvrir les couvercles de charnières.



B
Pull seat forward to disengage and remove. Clean only with a mild soap using a soft, damp cloth, and towel dry.

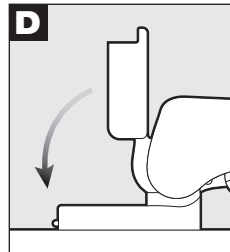
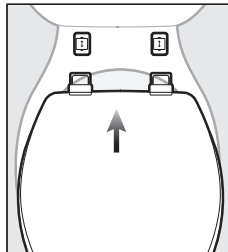
Tire del asiento hacia adelante para desengancharlo y extraerlo. Limpie solo con detergente suave usando un trapo húmedo, y seque con una toalla.

Tirer le siège vers l'avant pour le désengager et le retirer. Nettoyer uniquement avec un savon doux et un chiffon doux et humide, et sécher à l'aide d'une serviette.



C
Place seat on bowl and push back to reinstall.

Coloque el asiento en el sanitario y empuje hacia atrás para volver a instalarlo.
Placer le siège sur la cuvette et repousser pour le réinstaller.



D
Close hinge caps.

Cierre la tapa de las bisagras.
Fermer les couvercles de charnières.